



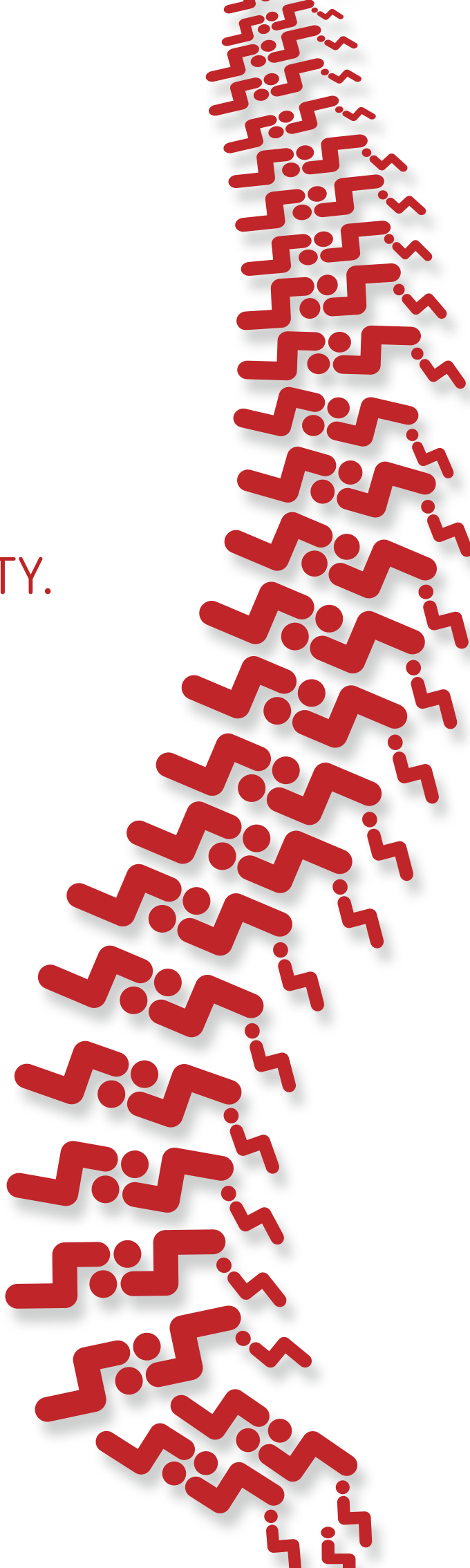






AT WERKSITZ, WE ARE  
COMMITTED TO PROVIDING  
ERGONOMIC WORKPLACES,  
THEREBY MAKING A  
SIGNIFICANT CONTRIBUTION  
TO HEALTH AND PRODUCTIVITY.

AND WE STAND BY THIS COMMITMENT.  
THE MILEWSKI FAMILY





# TEAM SPIRIT AND FRANCONIAN FAMILY TRADITION – YOUR GUARANTEE FOR RELIABILITY AND LASTING VALUE.

As “the specialists for workplace ergonomics”, we have been committed to providing customers with optimum products for the workplace since 1980. Over the years, we have developed a comprehensive range of swivel chairs and workplace floor mats in standard and customised designs for industry, trade, laboratories and workshops for the disabled.

Our custom-tailored products offer contemporary solutions for more comfortable sitting and standing and meet all special ergonomic workplace requirements, thereby making a significant contribution to health and productivity.

We put special emphasis on quality products that are reliable, durable and backed by a long-term warranty. The modular design of our products offers users maximum flexibility and investment security along with a spare part replacement guarantee for all of our components.

This is what we stand for as a sound Franconian family business. Take advantage of our no-obligation free trial to experience our quality for yourself.

The WERKSITZ TEAM





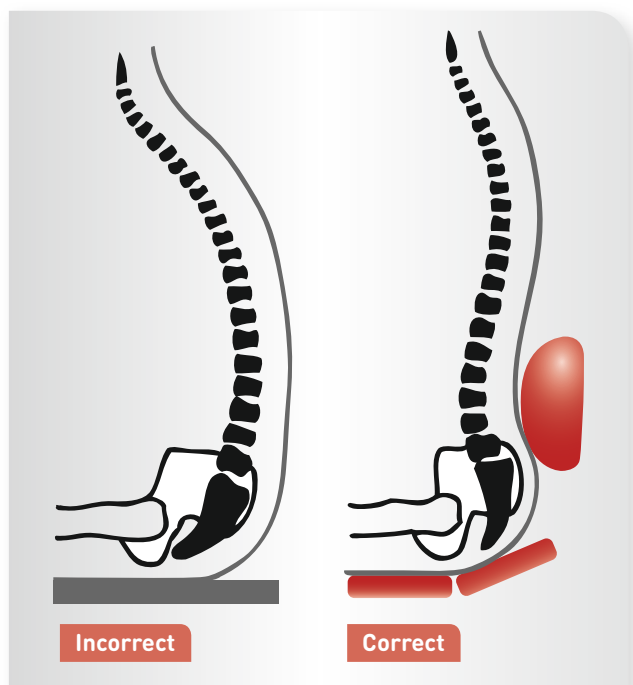


The specialists for workplace ergonomics





# THE ERGONOMIC WERKSITZ CONCEPT



Due to their ergonomically correct design, WERKSITZ work chairs encourage "dynamic sitting" while simultaneously promoting proper posture in every position.

Ergonomically designed seats and backrests provide beneficial pressure distribution and pleasant climate comfort.

We offer a variety of cushions and covers that can be precisely adapted to the conditions our chairs are used in.

Numerous options including armrests, step-up rails, footrests, swivel locks and inflatable lumbar support pads complete our range of products.



People spend one third of their professional lives sitting on their work chairs. Anyone who performs strenuous or repetitive tasks in the workplace needs a chair that will provide them with proper support. WERKSITZ work chairs can be adapted to any working situation and provide excellent stability and support, yet they do not restrict freedom of movement.

Frequently changing your posture while seated reduces one-sided, unhealthy strain on the muscles and the intervertebral discs. The spinal column assumes its natural S-shape and takes the strain off the intervertebral discs and the buttocks, which improves blood circulation and the supply of nutrients. This enables the intervertebral discs to regenerate while simultaneously boosting concentration and performance.

**”** We value ergonomic posture and rely on WERKSITZ chairs. A new DIN-compatible work chair costs less than one lost day of work due to back pain.



# ERGONOMICS GUIDELINES



## Forward posture

- The back is extremely rounded or – if the posture is rigid – pushed forward considerably
- The centre of gravity of the torso is in front of the buttocks
- The hip angle or sitting angle is less than 90° with the thighs almost horizontal
- Increased internal stomach pressure has an adverse effect on the venous returns in the pelvic region and results in statically tense muscles

➔ If the body is not straightened after a short time, the torso will need to be supported by the arms lying on the worktop (restoring the balanced condition to relax the muscles). Compared to the straight or rear posture, the shoulder and neck muscles must engage in more static work in order to hold the body in the forward sitting posture.



## Straight posture

- The centre of gravity of the torso is in the buttock area
- Statically balanced posture while seated, the spine is only slightly curved from the lumbar to the cervical spine with most of the muscles relaxed and deeper breathing (=Asian relaxing position)

➔ All types of work demand body movements that interfere with the delicate balance of the straight sitting posture. Muscle work is required to restore the balance. This is why straight posture while seated is one of the least important working postures.



## Rear posture

- If there is a lack of support, the pelvis is turned back on the seat
- Open hip angle (in relation to the pelvis), i.e. greater than 90°
- Different spine curvature depending on the position of the sacrum

➔ The greater the curvature of the thoracic vertebrae, the more support the cervical spine requires. If the trunk is supported by a backrest, the spine can stretch (back muscles are largely relaxed).



# SAFETY AND QUALITY



We are the "specialists for workplace ergonomics", after all, so certified safety and quality are our top priorities.

This is why we develop all of our components in house. Our plant in Zeil am Main is your guarantee for quality.

To ensure that WERKSITZ products always work reliably, we subject them to an extensive range of tests before our work chairs leave the factory.

WERKSITZ work chairs meet the stringent DIN 68 877 occupational health and safety standards.

They also conform with the statutory provisions outlined in the German Workplace Ordinance, Article 25 of the Workplace Directives.

WERKSITZ chairs are manufactured in accordance with the certified DIN ISO 9001 quality management system. Our work chairs are tested by TÜV Rheinland and bear the GS certification mark.

Outstanding WERKSITZ quality with a 5-year warranty. \*)



WERKSITZ QUALITY CHECK	
5-YEAR WARRANTY	✓
10-YEAR SPARE PART REPLACEMENT GUARANTEE	✓
   	✓

\*) if properly used in single-shift operation (excluding wear parts)

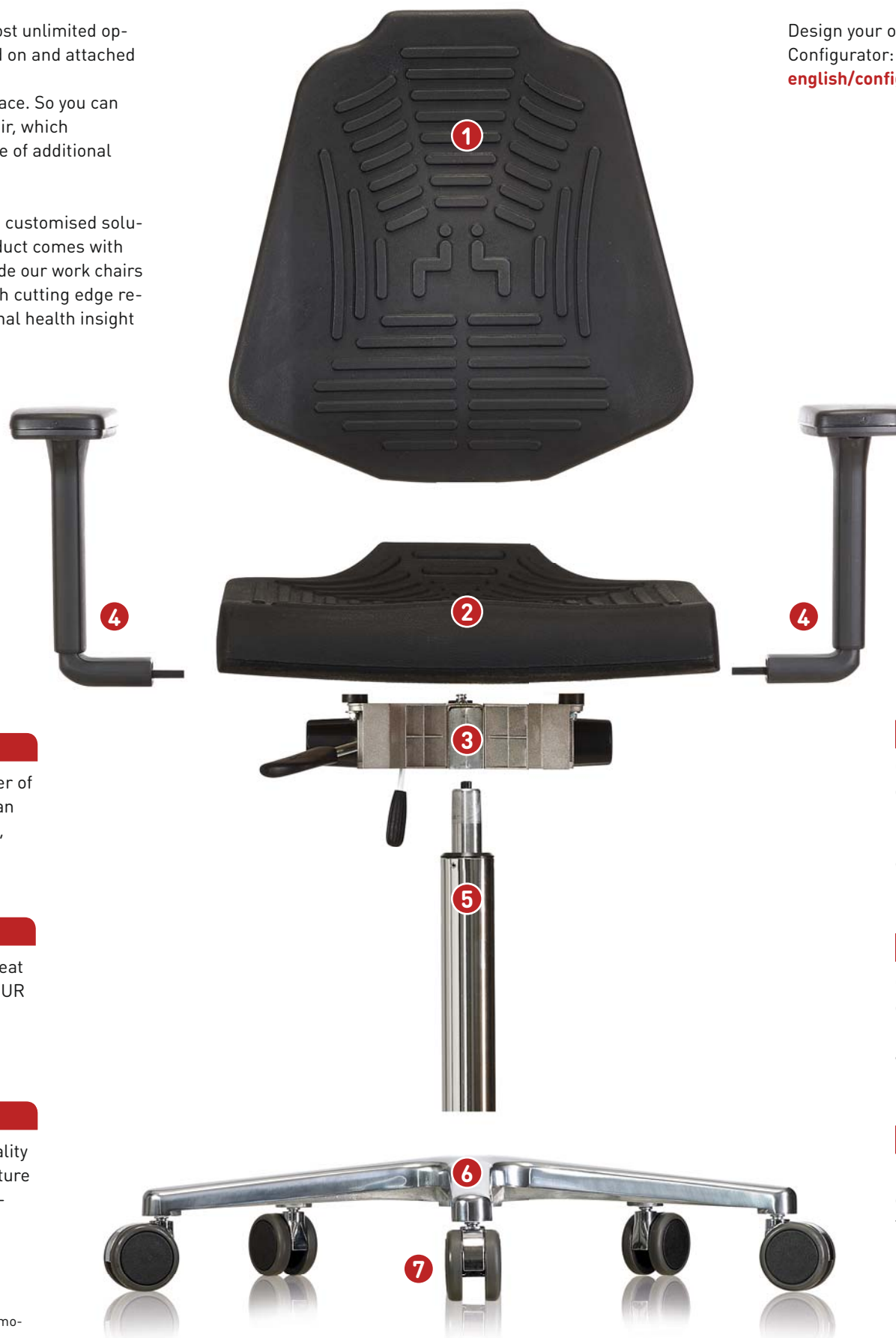


# THE WERKSITZ MODULAR DESIGN CONCEPT

Our modular system provides almost unlimited options; all components are screwed on and attached to the chair. This ensures that all chair elements are easy to replace. So you can create your own personalised chair, which can be enhanced with a wide range of additional accessories.

We are also happy to manufacture customised solutions for you. Your WERKSITZ product comes with all of the advantages that have made our work chairs so popular: High quality paired with cutting edge research, technology and occupational health insight and expertise.

Design your own chair with our Web Configurator: [www.werksitz.com/english/configurator](http://www.werksitz.com/english/configurator)



## 1. Backrests and covers

Armrests are available in a number of different designs and sizes. You can choose from PUR integral foam\*\*, imitation leather, fabric or wood.

## 2. Seat bases

You can choose from a variety of seat designs and materials including PUR integral foam\*\*, imitation leather, fabric or wood.

## 3. Seat supports

We developed these premium-quality seat supports ourselves. They feature a modular design along with easy-care maintenance and repair.

## 4. Armrests

Armrests feature a variety of designs and materials such as PUR integral foam\*\*, imitation leather, fabric or wood. They can be assembled in fixed or height-adjustable formats or with a 3D multifunction (even on existing chairs).

## 5. Chair columns

Chair columns in different sizes with gas pressure springs are available in height-adjustable, chrome-plated or powder-coated (black) versions. They can also be fitted with a cover tube on request.

## 6. Five-star bases

Our five-star bases made of high-quality diecast aluminium come in polished or blasted versions. They are also available in different colours on request.

## 7. Castors, glides and disc bases

Depending on the field of application, our work chairs can be fitted with castors, glides or disc bases.

\*\* Viscoelastic PUR integral foam with thermo-sensitive properties



DISCOVER  
OUR VARIETY.







## WERKSITZ KLIMASTAR

The premium work chair

12 – 21

## WERKSITZ CLASSIC

The versatile work chair

22 – 31

## WERKSITZ ECONOLINE

The rugged and economical work chair

32 – 37

## INDUSTRY, PRODUCTION AND WORKSHOPS

38 – 47

## ESD AREAS

48 – 49

## LABORATORIES AND CLEAN ROOMS

50 – 57

## WET ROOMS

58 – 61

## PEOPLE WITH DISABILITIES

62 – 65

## ACCESSORIES

Customised upgrades and spare parts

66 – 68

## SELECTION OF COLOURS AND FABRICS

69

## ENVIRONMENTAL ASPECTS

70 – 71

## WERKSTEP

72 – 77



# WERKSITZ KLIMASTAR – PERFECTION IN COMFORT AND ERGONOMICS

Optimum seat climate and comfort thanks to continuous air circulation. Ergonomic innovations promote healthy, dynamic sitting.



”

We do not want to sacrifice healthy posture while seated or a pleasant seat climate. This is why we chose the WERKSITZ Klimastar chair.





## KLIMASTAR – The premium work chair from WERKSITZ



### Great climate

- Fully perforated seats and backrests
- Maximum air circulation
- Optimum seat climate

Fully perforated seats and backrests provide continuous air circulation and an optimum seat climate\*.

\* Studies conducted by the chair of ergonomics at the Technical University of Munich showed that perforated seats demonstrate significantly superior microclimatic properties (wet and dry heat transport) over seats without perforations. (Zeitschrift für Arbeitswissenschaft)

### Hygienic

- Removable cushions
- Easy to clean

Removable and interchangeable PUR integral foam\*\* cushions ensure optimum occupational hygiene, especially in multi-shift operations.

\*\* Viscoelastic PUR integral foam with thermosensitive properties



Also available in an ESD model as an electrically conductive swivel chair for protection against electrostatic discharge in accordance with the EN 61340-5-1 standard.

### Ergonomic

- Adjustable height
- Large, tilt-adjustable seat
- High backrest:
  - Adjustable height
  - Supports the upper back
  - Relieves the spine
  - Protects the kidney area
- Precision backrest contact pressure adjustment
- Motion-synchronous pivot point shifting
- Ergonomically designed seat and back cushions

Our chairs offer plenty of room for healthy, dynamic sitting thanks to their ergonomic, tilt-adjustable seats and high backrests with individually adjustable contact pressure.

Ergonomic innovation featuring motion-synchronous pivot point shifting. This prevents the user's shirt from "riding up" as a result of an awkward reclining angle.

### User friendly

- Functionally arranged adjusting elements
- Easy and intuitive operation

Seat positions can be adjusted easily, with just a few quick motions. Adjusting elements are functionally arranged and easy to use.

### Technical specifications

Dimensions	Width in mm	Depth in mm
Seat	470 front, 415 back	457
Backrest	322 top, 400 bottom	433

Tilt	Forward	Back
Seat	-2°	+5°
Backrest	-11°	+6°



# WERKSITZ KLIMASTAR

## SWIVEL CHAIR WITH CASTORS

with PUR integral foam\*\* cushions



**WS 9220**  
black (RAL 9005)

- PUR integral foam\*\* backrest and seat
- Chrome-plated armrests\* with PUR integral foam\*\* covers
- Chrome-plated cover tube\*
- Height adjustment with safety gas spring
- Polished diecast aluminium five-star base with load-dependent braking castors

### WERKSITZ FREE TRIAL

Simply order a test sample  
and try it out for 14 days free of charge!



with breathable 3D honeycomb fabric  
(also available in fabric or imitation leather)



**WS 9320 3D**  
blue (no. 3D11)

- 3D honeycomb fabric backrest and seat
- Black, hard plastic, height-adjustable armrests\*
- Chrome-plated cover tube\*
- Height adjustment with safety gas spring
- Polished diecast aluminium five-star base with load-dependent braking castors



You will find an overview of  
all of our materials and colours  
on page 69.

\* Accessories (see pages 15 and 66–68)

\*\* Viscoelastic PUR integral foam with thermosensitive properties



# ACCESSORIES

## Armrests (in pairs)

**Armrests** with PUR integral foam\*\* covers, chrome-plated tubing. Colours coordinated to match chair colour or another colour of choice.

Order no.:  
**-010 CH.90**



**Armrests** with PUR integral foam\*\* covers, chrome-plated tubing. Colours coordinated to match chair colour or another colour of choice.

Order no.:  
**-011 CH.90**



**Armrests** made of hard plastic, height adjustable, swivel-mounted, laterally adjustable, also optionally available with polished aluminium supports (-010 H.90 ALU).

Order no.:  
**-010 H.90**



**Armrests** made of hard plastic, height adjustable by 70 mm.

Order no.:  
**-011 H.90**



## Headrests

**Headrest** with 3D honeycomb fabric.



**Headrest** with fabric.



**Headrest** with imitation leather.



WERKSITZ QUALITY CHECK		
5-YEAR WARRANTY		✓
10-YEAR SPARE PART REPLACEMENT GUARANTEE		✓
		✓
DIN 68877		

## Foot rings

**Chrome-plated foot ring, Ø 440 mm**, with separate clamp and plastic bushing, infinitely variable height adjustment at the column.

Order no.: **-05 K**

**Chrome-plated foot ring, Ø 540 mm**, with separate clamp and plastic bushing, infinitely variable height adjustment at the column.

Order no.: **-05**



## Five-star base with castors and foot release

Effortless height adjustment and comfortable, contamination-free work while seated. Ideal for all chairs with castors, especially suited for laboratory and medical applications.

Order no.: **-079**



\*\* Viscoelastic PUR integral foam with thermosensitive properties



# WERKSITZ KLIMASTAR

## SWIVEL CHAIR WITH GLIDES

with PUR integral foam\*\* cushions



### WS 9210

distant blue (RAL 5023)

- PUR integral foam\*\* backrest and seat
- Chrome-plated armrests\* with PUR integral foam\*\* covers
- Chrome-plated cover tube\*
- Height adjustment with safety gas spring
- Polished diecast aluminium five-star base, with glides

with breathable 3D honeycomb fabric  
(also available in fabric or imitation leather)



### WS 9310 3D

red (no. 3D07)

- 3D honeycomb fabric backrest and seat
- Chrome-plated armrests\* with PUR integral foam\*\* covers
- Chrome-plated cover tube\*
- Height adjustment with safety gas spring
- Polished diecast aluminium five-star base, with glides



You will find an overview of the materials and colours we use on page 69.

### WERKSITZ FREE TRIAL

Simply order a test sample and try it out for 14 days free of charge!



\* Accessories (see pages 17 and 66-68)

\*\* Viscoelastic PUR integral foam with thermosensitive properties



# ACCESSORIES

## Armrests (in pairs)

**Armrests** with PUR integral foam\*\* covers, chrome-plated tubing. Colours coordinated to match chair colour or another colour of choice.

Order no.:  
**-010 CH.90**



**Armrests** with PUR integral foam\*\* covers, chrome-plated tubing. Colours coordinated to match chair colour or another colour of choice.

Order no.:  
**-011 CH.90**



**Armrests** made of hard plastic, height adjustable, swivel-mounted, laterally adjustable, also optionally available with polished aluminium supports (-010 H.90 ALU).

Order no.:  
**-010 H.90**



**Armrests** made of hard plastic, height adjustable by 70 mm.

Order no.:  
**-011 H.90**



## Headrests

**Headrest** with 3D honeycomb fabric.



**Headrest** with fabric.



**Headrest** with imitation leather.



## Foot rings

**Chrome-plated foot ring, Ø 440 mm**, with separate clamp and plastic bushing, infinitely variable height adjustment at the column.

Order no.: **-05 K**

**Chrome-plated foot ring, Ø 540 mm**, with separate clamp and plastic bushing, infinitely variable height adjustment at the column.

Order no.: **-05**



## Disc bases

**Disc bases** are available:

- in size Ø 430 mm (-T 430)
- in size Ø 560 mm (-T 560)
- **black**, optionally with PUR moulded edge
- **leaf green**, optionally with PUR moulded edge
- **chrome-plated**, optionally with PUR moulded edge



## Swivel lock

**Swivel lock**

Order no.: **-0711.90**



WERKSITZ QUALITY CHECK	
5-YEAR WARRANTY	✓
10-YEAR SPARE PART REPLACEMENT GUARANTEE	✓
   	✓

\*\* Viscoelastic PUR integral foam with thermosensitive properties



# WERKSITZ KLIMASTAR HIGH CHAIRS

## WERKSITZ FREE TRIAL

Simply order a test sample  
and try it out for 14 days free of charge!



with PUR integral foam\*\* cushions



### WS 9211.20

ultramarine blue (RAL 5002)

- PUR integral foam\*\* backrest and seat
- Chrome-plated armrests\* with PUR integral foam\*\* covers
- Chrome-plated cover tube\*
- Height adjustment with safety gas spring
- Polished diecast aluminium five-star base, with sit-stop castors

with breathable 3D honeycomb fabric

(also available in fabric or imitation leather)



### WS 9311 3D

red (no. 3D07)

- 3D honeycomb fabric backrest and seat
- Chrome-plated armrests\* with PUR integral foam\*\* covers
- Step-up rails\*
- Chrome-plated cover tube\*
- Height adjustment with safety gas spring
- Polished diecast aluminium five-star base, with glides



You will find an overview  
of the materials and colours we  
use on page 69.

\* Accessories (see pages 19 and 66–68)

\*\* Viscoelastic PUR integral foam with  
thermosensitive properties



# ACCESSORIES

with PUR integral foam\*\* cushions



**WS 9211 TPU**  
black (RAL 9005)

- PUR integral foam\*\* backrest and seat
- Armrests\* chrome-plated with black PUR integral foam\*\* covers
- Step-up rail\*
- Chrome-plated cover tube\*
- Height adjustment with safety gas spring
- Disc base in black, with PUR moulded edge

## Armrests (in pairs)

**Armrests** with PUR integral foam\*\* covers, chrome-plated tubing. Colours coordinated to match chair colour or another colour of choice.  
Order no.: **-010 CH.90**

**Armrests** with PUR integral foam\*\* covers, chrome-plated tubing. Colours coordinated to match chair colour or another colour of choice.  
Order no.: **-011 CH.90**

**Armrests** made of hard plastic, height adjustable, swivel-mounted, laterally adjustable, also optionally available with polished aluminium supports (-010 H.90 ALU).  
Order no.: **-010 H.90**

**Armrests** made of hard plastic, height adjustable by 70 mm.  
Order no.: **-011 H.90**



## Step-up rails for high chairs

**Step-up rail**, tilt adjustable by 23°. Equipped with anti-slip footrest. The step-up rail can be folded upwards and follows the rotation and height adjustment of the chair. Height adjustment range: 60 mm.  
Order no.: **-06.90**

**Step-up rail** follows the rotation and height adjustment of the chair. Easy to install on existing chairs. Height adjustment range: 60 mm.  
Order no.: **-04.90**



\* Accessories (see right, pages 19 and 66–68)

\*\* Viscoelastic PUR integral foam with thermosensitive properties

Additional accessories on the next page ►



# ACCESSORIES FOR HIGH CHAIRS

## Foot rings

**Chrome-plated foot ring, Ø 440 mm,**  
with separate clamp and plastic bushing,  
infinitely variable height adjustment at the  
column.

Order no.: **-05 K**



**Chrome-plated foot ring, Ø 540 mm,**  
with separate clamp and plastic bushing,  
infinitely variable height adjustment at the  
column.

Order no.: **-05**

## Swivel lock

**Swivel lock**

Order no.: **-0711.90**



## Disc bases

### Disc bases

are available:

- in size Ø 430 mm [-T 430]
- in size Ø 560 mm [-T 560]
- **black**, optionally with PUR moulded edge
- **leaf green**, optionally with PUR moulded edge
- **chrome-plated**, optionally with PUR moulded edge



## Special accessories

You will find additional accessories on [pages 66–68](#).

Naturally, we also offer custom solutions specially tailored to your needs and wishes.

**Combine** seat and backrest colours or materials. There are (virtually) no limits to the variety available here.

Visit our website at [www.werksitz.com](http://www.werksitz.com) or contact one of our experts.

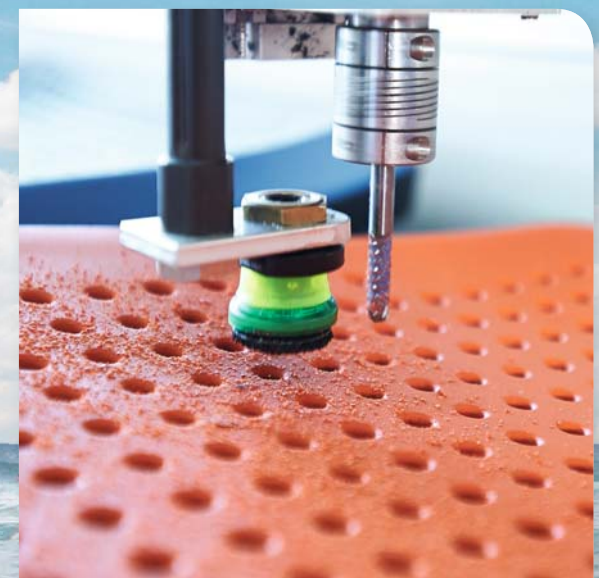
Design your own chair with our [Web Configurator](#)

[www.werksitz.com/english/configurator](http://www.werksitz.com/english/configurator)



**WERKSITZ FREE TRIAL**

Simply order a test sample  
and try it out for 14 days free of charge!



\*\* Viscoelastic PUR integral foam with thermosensitive properties



# GREAT CLIMATE WITH THE WERKSITZ KLIMASTAR





# WERKSITZ CLASSIC – FOR DAILY USE IN THE MOST DEMANDING APPLICATIONS

These ergonomically advanced swivel chairs offer versatility along with quality craftsmanship for everyday use.



“ Our customers are not the only ones with high standards. WERKSITZ chairs have the best image here. The sophisticated technology and the quality craftsmanship give us the assurance we need.



WERKSITZ QUALITY CHECK	i
5-YEAR WARRANTY	✓
10-YEAR SPARE PART REPLACEMENT GUARANTEE	✓
   	✓





## CLASSIC – The versatile work chair from WERKSITZ



### Ergonomic

- Adjustable height
- Large, tilt-adjustable seat
- High backrest:
  - Adjustable height
  - Supports the upper back
  - Relieves the spine
  - Protects the kidney area
- Precision backrest contact pressure adjustment
- Motion-synchronous pivot point shifting
- Ergonomically designed seat and back cushions

Our chairs offer plenty of room for healthy, dynamic sitting thanks to their ergonomic, tilt-adjustable seats and high backrests with individually adjustable contact pressure.

Ergonomic innovation featuring motion-synchronous pivot point shifting. This prevents the user's shirt from "riding up" as a result of an awkward reclining angle.



### User friendly

- Functionally arranged adjusting elements
- Easy and intuitive operation

Seat positions can be adjusted easily, with just a few quick motions. Adjusting elements are functionally arranged and easy to use.

### Versatile



- Seat and backrest made of wood – an organic product featuring nature's perfect design



- Perforated



- Ergonomic seat cushion made of durable black fabric

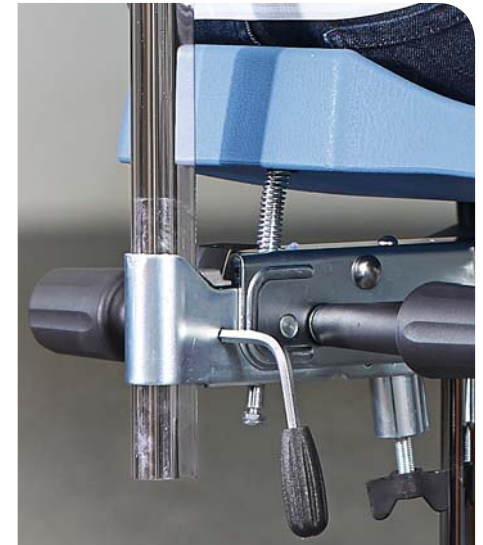


- Also available in imitation leather or fabric designs



- Viscoelastic PUR integral foam with thermosensitive properties

### Rugged



The extremely durable and rugged work chairs from WERKSITZ are manufactured using only the highest quality materials. They meet "GS-certified safety" standards and are made in Germany.



Also available in an ESD model as an electrically conductive swivel chair for protection against electrostatic discharge in accordance with the EN 61340-5-1 standard.

### Technical specifications

Dimensions	Width in mm	Depth in mm
Seat	460	436
Backrest	420	300

Tilt	Forward	Back
Seat	-6°	+8°
Backrest	-10°	+8°



# WERKSITZ CLASSIC

## SWIVEL CHAIR WITH CASTORS

with PUR integral foam\*\* backrest and seat



**WS 1220 E XL**  
black (RAL 9005)

- PUR integral foam\*\* XL backrest and seat
- Hard plastic, height-adjustable armrests\*
- Chrome-plated cover tube\*
- Height adjustment with safety gas spring
- Polished diecast aluminium five-star base with load-dependent braking castors

with fabric backrest and seat



**WS 1320 XL**  
cactus (no. 126/126)

- Fabric XL backrest and seat
- Hard plastic ring armrests\*
- Chrome-plated cover tube\*
- Height adjustment with safety gas spring
- Polished diecast aluminium five-star base with load-dependent braking castors

\* Accessories (see pages 28–30 and 66–68)

\*\* Viscoelastic PUR integral foam with thermosensitive properties

**WERKSITZ FREE TRIAL**

Simply order a test sample  
and try it out for 14 days free of charge!





with wooden backrest and seat

with imitation leather backrest and seat

#### WS 1020 XL

8-ply glued, moulded,  
natural varnished beechwood

- Wooden XL backrest and XL seat
- Armrests with wooden surfaces\*
- Chrome-plated cover tube\*
- Height adjustment with safety gas spring
- Polished diecast aluminium five-star base with load-dependent braking castors



#### WS 1320 KL XL

sapphire blue  
(no. 207x729)

- Imitation leather XL backrest and XL seat
- Hard plastic, height-adjustable armrests\*
- Chrome-plated cover tube\*
- Height adjustment with safety gas spring
- Polished diecast aluminium five-star base with load-dependent braking castors



You will find an overview  
of the materials and colours we  
use on page 69.

\* Accessories (see pages 28–30 and 66–68)



# WERKSITZ CLASSIC

## SWIVEL CHAIR WITH GLIDES

with PUR integral foam\*\*  
backrest and seat



**WS 1210 E**  
black (RAL 9005)

- PUR integral foam\*\* backrest and seat
- Height adjustment with safety gas spring
- Polished diecast aluminium five-star base with glides

with fabric backrest and  
seat



**WS 1310**  
pumpkin (no. 241/241)

- Fabric Ergo backrest and seat
- Hard plastic\* safety armrests
- Height adjustment with safety gas spring
- Polished diecast aluminium five-star base with glides

with wooden backrest  
and seat



**WS 1010**  
8-ply glued,  
moulded, natural varnished beechwood

- Wooden backrest and seat
- Height adjustment with safety gas spring
- Polished diecast aluminium five-star base with glides

with imitation leather  
backrest and seat



**WS 1310 KL**  
dark grey (no. 207x3120)

- Imitation leather backrest and seat
- Height adjustment with safety gas spring
- Polished diecast aluminium five-star base with glides

\* Accessories (see pages 28–30 and 66–68)

\*\* Viscoelastic PUR integral foam with thermosensitive properties

**WERKSITZ FREE TRIAL**

Simply order a test sample  
and try it out for 14 days free of charge!





# WERKSITZ CLASSIC

## HIGH CHAIRS

with PUR integral foam\*\*  
backrest and seat



**WS 1211 E XL**  
signal red (RAL 3001)

- PUR integral foam\*\* backrest and seat
- Step-up rail\*
- Height adjustment with safety gas spring
- Polished diecast aluminium five-star base with glides

with fabric backrest and  
seat



**WS 1311.20**  
emerald (no. 128/128)

- Fabric Ergo backrest and seat
- Step-up rail\*
- Height adjustment with safety gas spring
- Polished diecast aluminium five-star base with sit-stop castors

with wooden backrest  
and seat



**WS 1011 XL**  
8-ply glued, moulded, natural varnished  
beechwood

- Wooden XL backrest and XL seat
- Step-up rail\*
- Height adjustment with safety gas spring
- Chrome-plated\* disc base

with imitation leather  
backrest and seat



**WS 1311.20 KL**  
turquoise (no. 208x729)

- Imitation leather Ergo backrest\* and seat
- Step-up rail\*
- Height adjustment with safety gas spring
- Polished diecast aluminium five-star base with sit-stop castors

\* Accessories (see pages 28–30 and 66–68)

\*\* Viscoelastic PUR integral foam with thermosensitive properties



You will find an overview  
of the materials and colours we  
use on page 69.



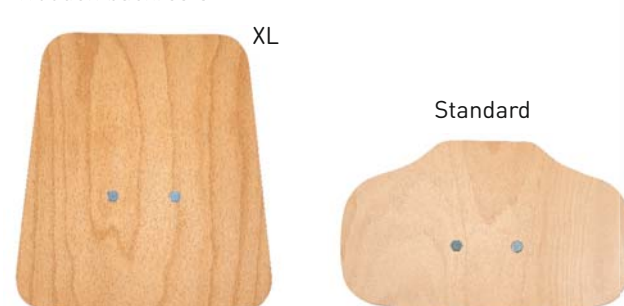
# THE CHOICE IS YOURS

## CLASSIC backrests are available in different sizes

PUR integral foam\*\* backrests



Wooden backrests

Swivel chair with **thorax backrest** for use in **nursery schools**

Fabric backrests



Imitation leather backrests



## Some CLASSIC chairs are available in two sizes

PUR integral foam\*\* seat



Fabric seats



Wooden seats



Imitation leather seats



\*\* Viscoelastic PUR integral foam with thermosensitive properties



# ACCESSORIES

## Armrests (in pairs)

**Armrests** with wooden surfaces, chrome-plated tubing.

Order no.: **-010 CH**



**Armrests** with PUR integral foam\*\* covers, powder-coated tubing. Colours coordinated to match chair colour or another colour of choice.

Order no.: **-010 CH**



**Armrests** made of hard plastic, height adjustable, swivel-mounted, laterally adjustable, also optionally available with polished aluminium supports (-010 H ALU).

Order no.: **-010 H**



WERKSITZ  
QUALITY CHECK



5-YEAR WARRANTY



10-YEAR SPARE PART  
REPLACEMENT GUARANTEE



TÜV Rheinland  
GS  
DIN 68877  
BIFMA



WERKSITZ FREE TRIAL

Simply order a test sample  
and try it out for 14 days free of charge!



Hard plastic **safety ring armrests**.

Order no.: **-011**



Hard plastic **safety ring armrests** featuring a modern design.

Order no.: **-011 D**



Hard plastic **safety ring armrests**, height-adjustable by 70 mm.

Order no.: **-011 H**



**Safety armrests** with wooden surfaces, chrome-plated tubing.

Order no.: **-012 CH**



## Special accessories

You will find even more accessories and special castors for a variety of floor types on [pages 66-68](#).

Naturally, we also offer custom solutions specially tailored to your needs and wishes.

**Combine** seat and backrest colours or materials. There are (virtually) no limits to the variety available here.

Visit our website at [www.werksitz.com](http://www.werksitz.com) or contact one of our experts.



Design your own chair with our **Web Configurator: [www.werksitz.com/english/configurator](http://www.werksitz.com/english/configurator)**

\*\* Viscoelastic PUR integral foam with thermosensitive properties



# ACCESSORIES

## Step-up rails for high chairs

**Step-up rail**, tilt adjustable by 23°. Equipped with anti-slip footrest. The step-up rail can be folded upwards and follows the rotation and height adjustment of the chair. Height adjustment range: 60 mm. Also available for ESD and GMP areas.

Order no.: -06



**Step-up rail** follows the rotation and height adjustment of the chair. Easy to install on existing chairs. Height adjustment range: 60 mm. Also available for ESD and GMP areas.

Order no.: -04



## Foot rings

**Chrome-plated foot ring, Ø 440 mm**, with separate clamp and plastic bushing, infinitely variable height adjustment at the column.

Order no.: -05 K

**Chrome-plated foot ring, Ø 540 mm**, with separate clamp and plastic bushing, infinitely variable height adjustment at the column.

Order no.: -05



## Five-star base with castors and foot release

Effortless height adjustment and comfortable, contamination-free work while seated. Ideal for all chairs with castors, especially suited for laboratory and medical applications.

Order no.: -079



## Swivel lock

**Swivel lock**

Order no.: -0711





# ULTIMATE COMFORT WITH WERKSITZ CLASSIC





# WERKSITZ ECONOLINE – A RUGGED WORK CHAIR FOR TOUGH WORK CONDITIONS

The economical chair concept:  
ECONOLINE, our affordable introductory  
model for healthy posture while seated.



WERKSITZ  
QUALITY CHECK



2-YEAR WARRANTY



SPARE PART REPLACEMENT  
GUARANTEE



Combining a healthy sitting posture for everyday work in tough conditions with ergonomics is far from simple when you are on a budget. But WERKSITZ did it for us with their ECONOLINE chairs.



■ Infinitely variable backrest adjustment



■ Adjustable seat tilt

## User friendly

- Seat height adjustment using a safety gas spring
- Infinitely variable backrest adjustment and adjustable seat tilt by using the lever
- Handy functional elements
- Tilt-safe five-star base made of high-grade, scratch and impact-resistant plastic
- Wear-resistant glides
- Dual castors with load-dependent braking

The rugged, user-friendly work chair for everyday work in tough conditions.



■ Dual castors with load-dependent braking



■ Handy functional elements

## Features

Rugged yet sophisticated features enable comfortable posture while seated. User-friendly operating elements make it easy for users to individually adapt their chairs to the desired seat position.



## Economical

ECONOLINE is a chair concept developed according to the industry standard. It promotes a healthy, ergonomic sitting posture even under the toughest work conditions.

The work chair is designed for a wide range of uses and features a variety of materials, including wood, fabric, imitation leather or PUR integral foam\*\*.

The WERKSITZ modular system makes it possible to configure customised chairs with additional accessories.

Technical specifications		
Dimensions	Width in mm	Depth in mm
Seat	443	420
Backrest	420	300
Tilt	Forward	Back
Seat	-4°	+6°
Backrest	-18°	+10°

\*\* Viscoelastic PUR integral foam with thermosensitive properties



# WERKSITZ ECONOLINE SWIVEL CHAIR

High chair with PUR integral foam\*\*  
backrest and seat



## WS 2211

distant blue (RAL 5023)

- High chair
- PUR integral foam\*\* backrest and seat
- Height adjustment with safety gas spring
- Foot ring\*
- Plastic five-star base with glides

Chair with castors and fabric backrest and seat  
(also available in imitation leather)



## WS 2320

anthracite (no. 068/063)

- Fabric backrest and seat
- Hard plastic armrests\*
- Height adjustment with safety gas spring
- Plastic five-star base with load-dependent braking castors

\* Accessories (see pages 35 and 66-68)

\*\* Viscoelastic PUR integral foam with thermosensitive properties

**WERKSITZ FREE TRIAL**

Simply order a test sample  
and try it out for 14 days free of charge!



# ACCESSORIES

Glide chair with wooden backrest and seat

## WS 2110

8-ply glued,  
moulded, natural varnished beechwood

- Wooden backrest and seat
- Height adjustment with safety gas spring
- Plastic five-star base with glides



## Armrests (in pairs)

Hard plastic **ring armrests**.

Order no.: **-011.20**



Hard plastic **armrests**, height-adjustable, swivel-mounted, laterally adjustable.

Order no.: **-010 H.20**



Hard plastic **armrests**, height-adjustable by 70 mm.

Order no.: **-011 H.20**



## Foot ring

**Chrome-plated foot ring**, Ø 440 mm, with separate clamp.

Order no.: **-05 K Ergo**



You will find an overview of the materials and colours we use on page 69.



# IT CAN STAND UP TO ANYTHING ... WERKSITZ ECONOLINE









# WORK CHAIRS FOR INDUSTRY, PRODUCTION AND WORKSHOPS

Healthy, dynamic sitting for well-being in the workplace – a business investment with lasting results.



“ Quality and reliability are the top priorities in our workshop. Investing in rugged work chairs from WERKSITZ was a good decision.



Also available in an ESD model as an electrically conductive swivel chair for protection against electrostatic discharge in accordance with the EN 61340-5-1 standard.



WERKSITZ QUALITY CHECK	i
5-YEAR WARRANTY	✓
10-YEAR SPARE PART REPLACEMENT GUARANTEE	✓
   	✓

# WERKSITZ WORK CHAIRS FOR INDUSTRY AND WORKSHOPS

Featuring imitation leather  
Ergo backrest

High chair with disc base

Assembly stool



You will find an overview  
of the materials and colours we  
use on page 69.



## WS 3610 PU

black (RAL 9005)

- Assembly stool with harness
- Weighs just 5 kg
- Height adjustment with safety gas spring
- Disc base

## WS 1211 E TPU

black (RAL 9005)

- PUR integral foam\*\* backrest and seat
- Step-up rail\*
- Height adjustment with safety gas spring
- Disc base with PUR moulded edge



## WS 1320 KL

light grey (no. 201)

- Imitation leather Ergo backrest\* and seat
- Also available in genuine leather
- Height adjustment with safety gas spring
- Polished diecast aluminium five-star base with load-dependent braking castors



\* Accessories (see pages 66–68)

\*\* Viscoelastic PUR integral foam with thermosensitive properties



Mobile parts trolley



# WERKSITZ WORK CHAIRS MADE OF WOOD

**WERKSITZ FREE TRIAL**

 Simply order a test sample  
and try it out for 14 days free of charge!


High chair with wooden backrest and seat


**WS 1011.20**

8-ply glued,  
moulded, natural varnished  
beechwood

- Wooden backrest and seat
- Step-up rail\*
- Height adjustment with safety gas spring
- Polished diecast aluminium five-star base with sit-stop castors

High chair with XL wooden backrest and seat


**WS 1011 XL**

8-ply glued,  
moulded, natural varnished  
beechwood

- Wooden XL backrest and XL seat
- Armrests with wooden surfaces\*
- Step-up rail\*
- Height adjustment with safety gas spring
- Polished diecast aluminium five-star base with glides



You will find an overview  
of the materials and colours we  
use on page 69.

\* Accessories (see pages 66–68)

# WERKSITZ WORK CHAIRS MADE OF WOOD

with XL wooden backrest and seat

with wooden backrest and seat



## WS 1020 XL

8-ply glued, moulded, natural varnished beechwood

- Wooden backrest and seat
- Height adjustment with safety gas spring
- Polished diecast aluminium five-star base with load-dependent braking castors



Also available with cushions



## WS 1010

8-ply glued, moulded, natural varnished beechwood

- Wooden backrest and seat
- Armrests\* with wooden surfaces
- Height adjustment with safety gas spring
- Polished diecast aluminium five-star base with glides



You will find an overview of the materials and colours we use on page 69.

**WERKSITZ FREE TRIAL**

Simply order a test sample and try it out for 14 days free of charge!



\* Accessories (see pages 66–68)



# WERKSITZ OVERHEAD WORK CHAIRS

## INDIVIDUAL ERGONOMICS

**WS 1285 XL**

Overhead work chair

- With safety gas spring for height adjustment
- With sliding seat function
- Infinitely variable seat tilt
- Height-adjustable backrest and headrest
- Parking brake



It is our pleasure to assist you in developing your individual solution.

**WS 1281**

Overhead work chair

- Special version
- With storage boxes
- Lowered, galvanised frame

# WERKSITZ OVERHEAD WORK CHAIRS

## INDIVIDUAL ERGONOMICS

### Overhead work chairs – the best solution for ergonomic work

- They offer the ideal solution for fatigue-free overhead work.
- The height-adjustable headrest relieves neck muscles.
- It is also easy to install an XL backrest.
- Work is safer thanks to the parking brake.
- 5-notch tilt adjustment helps this chair adapt perfectly both to human physiology and the job at hand.
- You can install customised accessories such as armrests, armrest covers, storage boxes and tool holders any time.

We are happy to offer you an individual consultation and design a customised work chair for you.



**WS 1281**  
Overhead work chair



**WS 1280**  
Special model  
Overhead work chair



**Overhead assembly recliner**  
■ Imitation leather upholstery  
■ Tilt-adjustable headrest



# WERKSITZ WORK STOOLS FOR INDUSTRY AND WORKSHOPS

## WERKSITZ FREE TRIAL

Simply order a test sample  
and try it out for 14 days free of charge!



Standing support



**WS 4211 TPU standing support**  
black (RAL 9005)

- PUR integral foam\*\* seat
- Height adjustment with safety gas spring
- Disc base with PUR moulded edge, colour: black

Low swivel stool



**WS 4022 low swivel stool**  
black (RAL 9005)

- PUR integral foam seat
- Height adjustment with safety gas spring
- Base: metal box surrounding the entire frame for storing tools or similar items, fitted with finely grooved mat

Saddle stool



**WS 3520 saddle stool**  
black (RAL 9005)

- PUR integral foam seat
- Height adjustment with safety gas spring
- Polished diecast aluminium five-star base with load-dependent braking castors

\* Accessories (see pages 66–68)

\*\* Viscoelastic PUR integral foam with thermosensitive properties

# WERKSITZ WORK STOOLS FOR INDUSTRY AND WORKSHOPS

Stool with backrest bar

Stool with wooden seat

Stool with PUR integral foam\*\*



**WS 3120 with backrest bar**  
Wood, white

- 29-ply glued wooden seat
- Stool seat Ø 350 mm
- Chrome-plated backrest bar
- Varnished or stained in different colours on request
- Chrome-plated cover tube
- Height adjustment with safety gas spring
- Polished diecast aluminium five-star base with load-dependent braking castors



**WS 3010**  
Wood

- 8-ply glued wooden seat with clear varnish
- Stool seat Ø 350 mm
- Varnished or stained in different colours on request
- Height adjustment with safety gas spring
- Polished diecast aluminium five-star base with glides



**WS 3020 PU Classic**  
black (RAL 9005)

- PUR integral foam\*\* seat
- Stool seat Ø 360 mm
- Available in all PUR colours
- Height adjustment with safety gas spring
- Polished diecast aluminium five-star base with load-dependent braking castors



You will find an overview of the materials and colours we use on page 69.

\* Accessories (see pages 66–68)

\*\* Viscoelastic PUR integral foam with thermosensitive properties



# FOR EVERY AREA OF USE THE PERFECT WORK CHAIR FROM WERKSITZ







# WORK CHAIRS FOR ESD AREAS

Electrically conductive swivel chairs for protection against electrostatic discharge in accordance with the EN 61340-5-1 standard.



## WS 1620 XL KL ESD black (no. 217x293)

- Backrest and seat made from imitation leather with conductive design
- Chrome-plated cover tube\*
- Height adjustment with safety gas spring
- Polished diecast aluminium five-star base with conductive castors

### WERKSITZ FREE TRIAL

Simply order a test sample  
and try it out for 14 days free of charge!



\* Accessories (see pages 66–68)



“ Our assemblies are expensive and highly sensitive. So we rely on electrically conductive chairs from WERKSITZ to protect our components against any possible electrostatic interferences.

# WERKSITZ CLASSIC CONDUCTIVE SWIVEL CHAIRS



The **WERKSITZ KLIMASTAR\*\*\*** work chair is also available in a conductive version.

WERKSITZ QUALITY CHECK	
5-YEAR WARRANTY	✓
10-YEAR SPARE PART REPLACEMENT GUARANTEE	✓
   	✓



**WS 9311 ESD**  
wine red (no. 056/056)

- Conductive fabric backrest and seat
- Step-up rail\*
- Height adjustment with safety gas spring
- Polished diecast aluminium five-star base with conductive glides



**WS 1220 E XL ESD**  
black (RAL 9005)

- PUR integral foam\*\* backrest and seat
- Chrome-plated cover tube\*
- Height adjustment with safety gas spring
- Polished diecast aluminium five-star base with conductive castors



You will find an overview of the materials and colours we use on page 69.

\* Accessories (see pages 66–68)  
\*\* Viscoelastic PUR integral foam with thermosensitive properties  
\*\*\* WERKSITZ KLIMASTAR products are presented from page 12

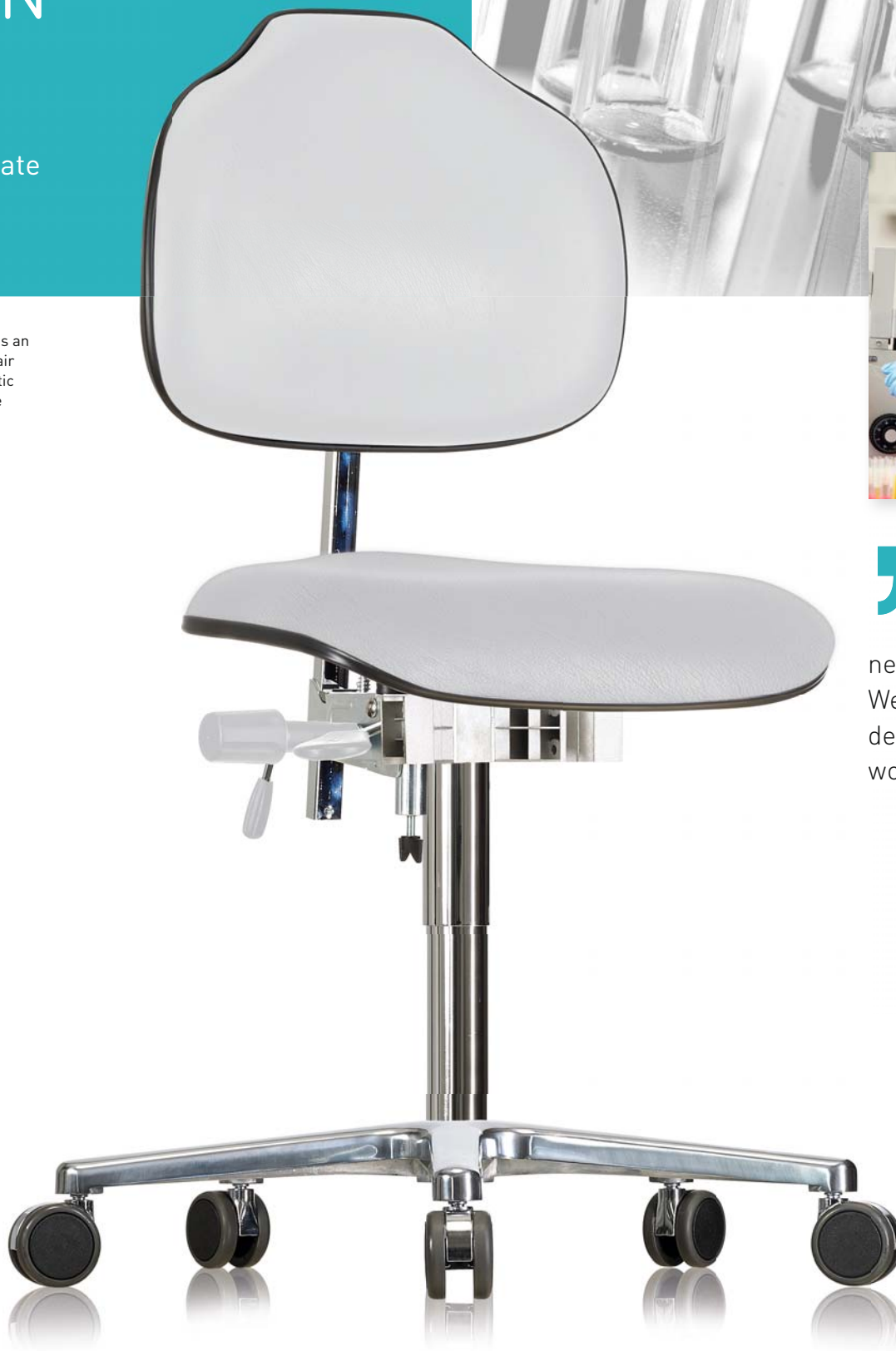


# WORK CHAIRS FOR LABORATORIES AND CLEAN ROOMS

Select materials for ultimate  
functionality and hygiene.



Also available in an ESD model as an electrically conductive swivel chair for protection against electrostatic discharge in accordance with the EN 61340-5-1 standard.



“ WERKSITZ work chairs meet our high standards for cleanliness and hygiene in every way. We remain satisfied with our decision to purchase WERKSITZ work chairs to this day.



You will find an overview of our imitation leather colours on page 69.

#### WERKSITZ FREE TRIAL

Simply order a test sample  
and try it out for 14 days free of charge!



# WERKSITZ CLASSIC – GMP LAB CHAIRS

## CLASSIC imitation leather swivel chair

WERKSITZ imitation leather is DIN 53160  
certified to be:

- Disinfectant resistant
- Blood resistant
- Urine resistant
- Saliva resistant
- Sweat resistant

**WS 1320 KL**  
lab mint (no. 200)

- Imitation leather Ergo backrest\* and seat
- Chrome-plated cover tube\*
- Height adjustment with safety gas spring
- Polished diecast aluminium five-star base with load-dependent braking castors



## CLASSIC PUR integral foam\*\* lab chair

### Perfect cleaning:

- Closed GMB seat support cover made of plastic and chrome-plated, polished metal parts
- All materials are washable and disinfectant resistant
- Suitable for S-classified laboratories
- Safety gas spring protected by cover tube



**WS 1211 GMP XL TPU**  
light grey (RAL 7035)

- PUR integral foam\*\* backrest and seat
- Chrome-plated cover tube
- Step-up rail\*
- Height adjustment with safety gas spring
- Chrome-plated disc base

\* Accessories (see pages 66–68)

\*\* Viscoelastic PUR integral foam with thermosensitive properties



# WERKSITZ CLASSIC – GMP

## LAB CHAIRS FOR GMP AREAS

CLASSIC PUR integral foam\*\* lab chair



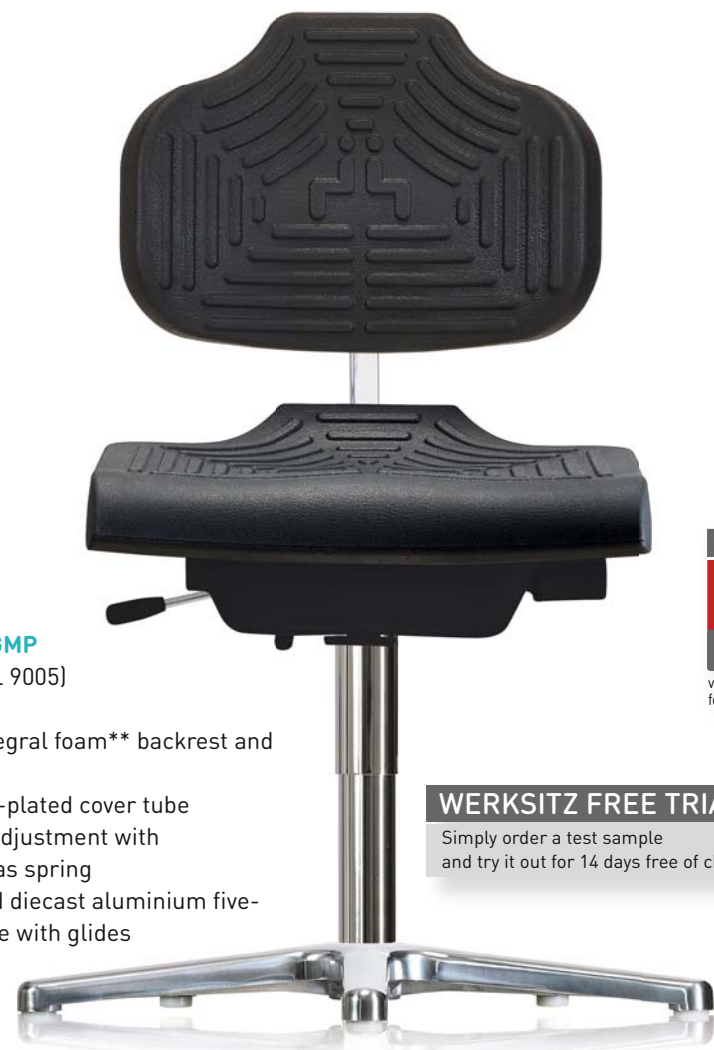
**WS 1210 XL T GMP**  
light grey (RAL 7035)

- PUR integral foam\*\* XL backrest and seat
- Chrome-plated cover tube
- Height adjustment with safety gas spring
- Chrome-plated disc base

CLASSIC PUR integral foam\*\* lab chair

**Made especially for GMP areas:**

- Closed seat support cover made of plastic and chrome-plated, polished metal parts
- All materials are washable and disinfectant resistant
- Suitable for S-classified laboratories
- Safety gas spring protected by cover tube



**WS 1210 GMP**  
black (RAL 9005)

- PUR integral foam\*\* backrest and seat
- Chrome-plated cover tube
- Height adjustment with safety gas spring
- Polished diecast aluminium five-star base with glides



**WERKSITZ FREE TRIAL**

Simply order a test sample and try it out for 14 days free of charge!



\* Accessories (see pages 66–68)

\*\* Viscoelastic PUR integral foam with thermosensitive properties

# WERKSITZ CLASSIC – GMP

## LAB CHAIRS FOR GMP AREAS

CLASSIC PUR integral foam\*\* lab chair



**WS 1220 XL GMP**  
black (RAL 9005)

- PUR integral foam\*\* backrest and seat
- Chrome-plated cover tube
- Height adjustment with safety gas spring
- Polished diecast aluminium five-star base with load-dependent braking castors

CLASSIC PUR integral foam\*\* lab high chair



**WS 1211.20 GMP**  
light grey (RAL 7035)

- PUR integral foam\*\* backrest and seat
- Chrome-plated cover tube
- Step-up rail\*
- Height adjustment with safety gas spring
- Polished diecast aluminium five-star base with sit-stop castors

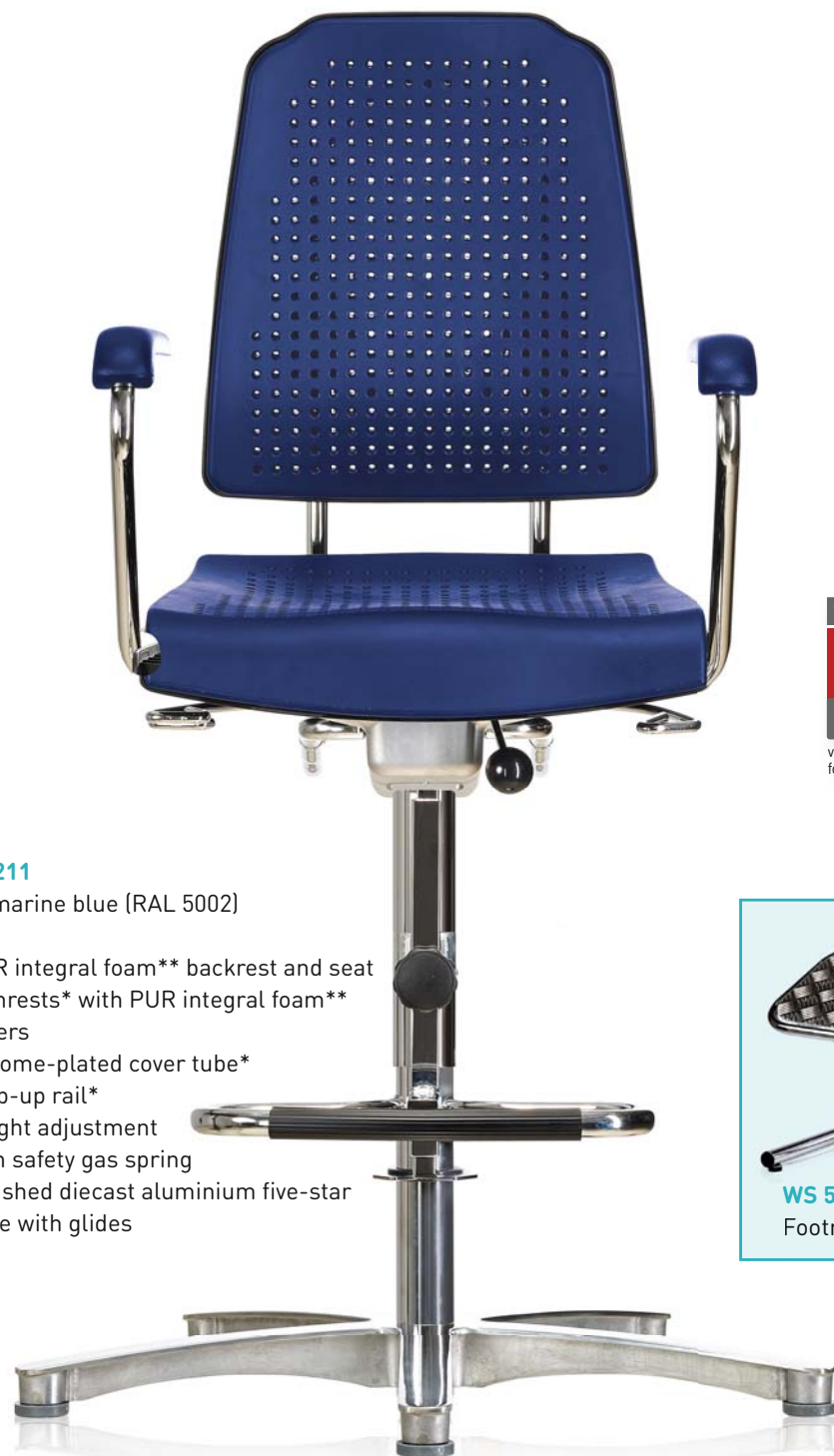
\* Accessories (see pages 66–68)

\*\* Viscoelastic PUR integral foam with thermosensitive properties



# WERKSITZ KLIMASTAR LAB CHAIRS

KLIMASTAR PUR integral foam\*\* high chair



## WS 9211

ultramarine blue (RAL 5002)

- PUR integral foam\*\* backrest and seat
- Armrests\* with PUR integral foam\*\* covers
- Chrome-plated cover tube\*
- Step-up rail\*
- Height adjustment with safety gas spring
- Polished diecast aluminium five-star base with glides



KLIMASTAR PUR integral foam\*\* swivel chair

## Perfect hygiene:

- Individual use thanks to removable cushions
- All materials are washable and disinfectant resistant



## WS 9220 light grey (RAL 7035)

- PUR integral foam\*\* backrest and seat
- Armrests\* with PUR integral foam\*\* covers
- Chrome-plated cover tube\*
- Height adjustment with safety gas spring
- Polished diecast aluminium five-star base with load-dependent braking castors

\* Accessories (see pages 66–68)

\*\* Viscoelastic PUR integral foam with thermosensitive properties

# WERKSITZ LABORATORY CLEAN ROOM CHAIRS



## Clean room chair

### Sturdy and hygienic:

- Certified for class-5 clean rooms according to the DIN EN ISO 14644-1 standard
- WERKSITZ imitation leather is urine, blood and sweat resistant in accordance with the DIN 53160 standard



### WS 1720 RR ESD

Black imitation leather (no. 217x293)

- Imitation leather backrest and seat
- Chrome-plated cover tube
- Height adjustment with safety gas spring
- Polished diecast aluminium five-star base with conductive castors



## Clean room high chair

### Perfect cleaning:

- All materials are washable and disinfectant resistant



### WS 1711 TPU RR ESD

Black imitation leather (no. 217x293)

- Imitation leather backrest and seat
- Chrome-plated cover tube
- Height adjustment with safety gas spring
- Foot ring\*
- Chrome-plated disc base



Also available with armrests\* (-011 CH.17).

\* Accessories (see pages 66–68)

\*\* Viscoelastic PUR integral foam with thermosensitive properties



# WERKSITZ CLASSIC – GMP

## STANDING SUPPORTS AND STOOLS



You will find an overview of the materials and colours we use on page 69.

### Standing support

#### Ergonomics

- Tilt adjustment between 2° and 15°
- Seat height adjustment using a safety gas spring
- Swivel stool for relaxed posture while seated and optimum freedom of movement at any height



#### WS 4211 GMP

light grey (RAL 7035)

- PUR integral foam\*\* seat
- Chrome-plated cover tube
- Height adjustment with safety gas spring
- Polished diecast aluminium five-star base with glides



### Stool

#### WS 3020 PU Classic

light grey (RAL 7035)

- PUR integral foam\*\* seat
- Chrome-plated cover tube\*
- Height adjustment with safety gas spring
- Polished diecast aluminium five-star base with foot release\* and load-dependent braking castors



### Saddle stool with backrest

#### Perfect cleaning:

- All materials are washable and disinfectant resistant
- Suitable for S-classified laboratories



#### WS 3520 KL GMP

light grey (no. 201)

- Imitation leather seat and backrest
- Chrome-plated cover tube
- Height adjustment with safety gas spring
- Polished diecast aluminium five-star base with load-dependent braking castors

\* Accessories (see pages 66–68)

\*\* Viscoelastic PUR integral foam with thermosensitive properties





WERKSITZ  
QUALITY CHECK



5-YEAR WARRANTY



10-YEAR SPARE PART  
REPLACEMENT GUARANTEE



WERKSITZ FREE TRIAL

Simply order a test sample  
and try it out for 14 days free of charge!



DIN  
68877





# STAINLESS STEEL WORK CHAIRS

For special cleanliness and  
hygiene requirements



“ Here, even our work  
chairs shine every  
day. Cleanliness is  
extremely important, especially  
in our work. After all, we want  
our excellent performance to  
shine.



## WERKSITZ FREE TRIAL

Simply order a test sample  
and try it out for 14 days free of charge!



## WERKSITZ QUALITY CHECK



## 5-YEAR WARRANTY



## 10-YEAR SPARE PART REPLACEMENT GUARANTEE



# WERKSITZ WORK CHAIRS

## MADE OF STAINLESS STEEL (V2A)

## FOR WET ROOMS

Glide chair for wet rooms

Also available with HPU coating for special hygiene requirements:

- Water repellent (thanks to sealed surface)
- Acid and solvent resistant
- Free of solvents, plasticisers and AZO dyes
- Heat resistant up to 100°C for short periods



**WS 1410**  
black (RAL 9005)

- PUR integral foam\*\* backrest and seat
- Height adjustment with safety gas spring
- Stainless steel five-star base with glides

Chair with castors for wet rooms



**WS 1420**  
light grey (RAL 7035)

- PUR integral foam\*\* backrest and seat
- Height adjustment with safety gas spring
- Stainless steel five-star base with load-dependent braking castors

\* Accessories (see pages 66–68)

\*\* Viscoelastic PUR integral foam with thermosensitive properties



# WERKSITZ STANDING SUPPORTS MADE OF STAINLESS STEEL (V2A) FOR WET ROOMS

## Wet room standing supports

### For special hygiene requirements:

- Good water resistance
- Heat resistant up to 100 °C for short periods

### WS 144211

black (RAL 9005)

- PUR integral foam\*\* seat (free of solvents, plasticisers and azo dyes)
- Seat (W x D) 390 x 350 mm
- Height adjustment range: 550–780 mm (with key groove mechanism)
- Stainless steel construction (acid and solvent resistant)



### WS 145050

Wet room footrest

- Sturdy tube construction
- 500 x 300 mm (W x D)
- Anti-slip footrest tilt adjustment from 0° to 20°, mounted on pendulum bearings



### WS 144211 U

black (RAL 9005)

- PUR integral foam\*\* seat
- Seat (W x D) 390 x 350 mm



You will find an overview of the materials and colours we use on page 69.

\* Accessories (see pages 66–68)

\*\* Viscoelastic PUR integral foam with thermosensitive properties

**WERKSITZ FREE TRIAL**

Simply order a test sample and try it out for 14 days free of charge!









# WORK CHAIRS FOR PEOPLE WITH DISABILITIES

WERKSITZ offers sophisticated ergonomic workplace design solutions for people with disabilities. Workshops for people with disabilities manufacture WERKSITZ chair components that meet the highest standards.



WERKSITZ QUALITY CHECK	
5-YEAR WARRANTY	✓
10-YEAR SPARE PART REPLACEMENT GUARANTEE	✓
	✓

## WS 1388.11 XL KL Black/sapphire blue imitation leather

chair for epileptics  
(no. 217x293/207x729)

- Two-colour design\*
- Imitation leather XL backrest with extended bracket
- Large seat
- With headrest
- Safety harness
- Safety armrest and lateral pelottes
- Safety gas spring for height adjustment
- Asymmetrical five-star base with foot ring and anti-slip footrest, extended\*, with foot plate\*, infinitely variable adjustment at the column
- Five-star base with glides

\* Accessories (see pages 66–68)

\*\* Viscoelastic PUR integral foam with thermosensitive properties

# CUSTOMISED SOLUTIONS FROM WERKSITZ

## WS 1387.20,

### specially designed for people of small stature

Black imitation leather (no. 217x293)/fabric, denim blue (no. 2312)

- Two-colour design\*
- Shorter backrest 410 x 250 mm (W x D)
- Shorter seat 430 x 330 mm (W x D)
- Height adjustment with safety gas spring
- Armrests available on request
- Polished diecast aluminium five-star base with load-dependent braking castors



## WS 1389 KL, two-colour, designed especially for heavy persons

Imitation leather black (no. 217x293)/fire red (no. 207x1173)

- Two-colour design\*
- Extra large seat
- Armrests\*
- Extended bracket
- Height adjustment with safety gas spring
- Chrome-plated cover tube
- Depth spring action
- Reinforced seat support plate
- Polished diecast aluminium five-star base with glides



You will find an overview of the materials and colours we use on page 69.

\* Accessories (see pages 66–68)



# THE RIGHT CHAIR FOR EVERY PERSON FROM WERKSITZ

## WS 1388.10 Black imitation leather chair for epileptics (no. 217x293)

- Ergo backrest with extended bracket
- Large seat
- With headrest
- Safety harness
- Safety armrest and swivel lock
- Height adjustment with safety gas spring
- Asymmetrical five-star base with foot ring and anti-slip footrest, infinitely variable adjustment at the column
- Standard design features an imitation leather backrest and seat, also available with PUR integral foam\*\* or fabric



## WS 1399.20 KL, Sapphire blue imitation leather arthrodesis chair (no. 207x729)

- Seat 490 x 430 mm (W x D)
- With safety armrests\*
- With lap belt\*
- Specially designed for people with leg amputations or legs with different lengths
- Retractable seat front parts, upholstered as standard
- Height adjustment with safety gas spring
- Polished diecast aluminium five-star base with load-dependent braking castors



You will find an overview of the materials and colours we use on page 69.

\* Accessories [see pages 66–68]

\*\* Viscoelastic PUR integral foam with thermosensitive properties







# OVERVIEW OF ACCESSORIES



KLIMASTAR



CLASSIC



ECONOLINE



## Armrests (in pairs)



Order no.: **-010**

.90

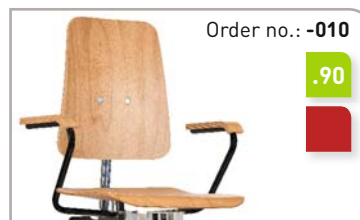
- With PUR integral foam\*\* covers
- Powder-coated tubing



Order no.: **-010CH**

.90

- With PUR integral foam\*\* covers
- Chrome-plated tubing



Order no.: **-010**

.90

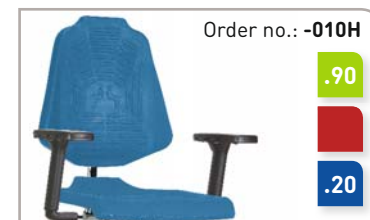
- With wooden surfaces
- Black powder-coated tubing



Order no.: **-010CH**

.90

- With wooden surfaces
- Chrome-plated tubing



Order no.: **-010H**

.90

.20

- Hard plastic multifunctional armrests



Order no.: **-011**

.20

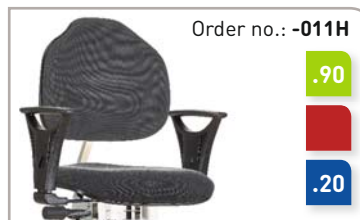
- Hard plastic safety ring armrests



Order no.: **-011D**

.20

- Hard plastic safety ring armrests with a modern design

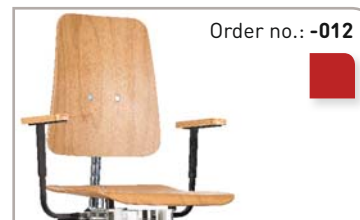


Order no.: **-011H**

.90

.20

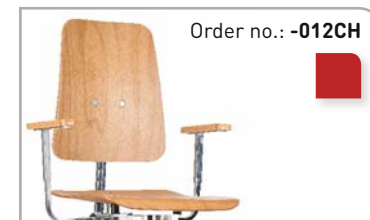
- Hard plastic, height-adjustable safety ring armrests



Order no.: **-012**

.90

- Safety armrests with wooden surfaces (also available with PUR integral foam\*\* covers)
- Black powder-coated tubing



Order no.: **-012CH**

.90

- Safety armrests with wooden surfaces (also available with PUR integral foam\*\* covers)
- Chrome-plated tubing



Order no.: **-011CH**

.90

- With PUR integral foam\*\* covers
- Chrome-plated tubing



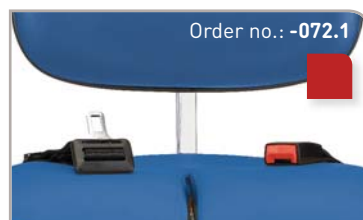
Order no.: **-010H**

.90

.20

- Hard plastic multifunctional armrests with polished aluminium supports

## Belts



Order no.: **-072.1**

- Only in combination with -010, -011 or 012 armrests



Order no.: **-072.2**

- Only in combination with -011 armrests

## Chair columns with gas springs

- For chairs with glides

Order no.: **-074.10**

Order no.: **-073.10**

Order no.: **-077.10**

- For chairs with castors

Order no.: **-074.20**

Order no.: **-073.20**

Order no.: **-077.20**

Dimensions for PUR cover    Dimensions for fabric cover    Dimensions for wooden surface

540-780 mm  
360-480 mm  
310-380 mm

540-780 mm  
360-480 mm  
310-380 mm

520-760 mm  
340-460 mm  
290-360 mm

570-830 mm  
370-490 mm  
330-400 mm

570-830 mm  
370-490 mm  
330-400 mm

560-820 mm  
350-470 mm  
310-380 mm



## Step-up rails for high chairs



- Height adjustment range: 60 mm
- Follows the rotation of the chair.
- Also available in ESD and GMP designs



- Height adjustment range: 60 mm
- Follows the rotation of the chair.
- Also available in ESD and GMP designs



- Height adjustment range: 60 mm
- Tilt-adjustable by 23°
- With anti-slip footrest
- Follows the rotation of the chair.
- Also available in ESD and GMP designs

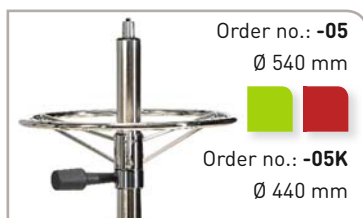


- Height adjustment range: 60 mm
- Tilt-adjustable by 23°
- With anti-slip footrest
- Follows the rotation of the chair.
- Also available in ESD and GMP designs

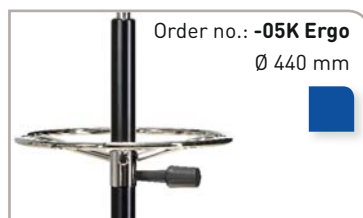


- With anti-slip design
- Follows the rotation of the chair.

## Foot rings



- Chrome-plated with separate clamp and plastic bushing
- Also available in ESD and GMP designs



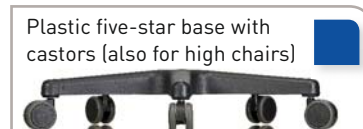
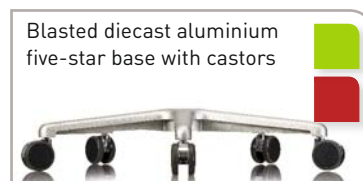
- Chrome-plated with separate clamp

## Swivel locks



Swivel locks are available in a number of different designs for all KLIMASTAR and CLASSIC chairs.

## Five-star bases



## Disc bases





# OVERVIEW OF ACCESSORIES



## Parking brakes



- black, powder-coated
- with hand release lever (250 mm long)
- Only in combination with xx20 diecast aluminium five-star bases



- black, powder-coated
- with foot pedal,
- Only in combination with xx20 diecast aluminium five-star bases



- Effortless height adjustment and contamination-free work while comfortably seated

## Foot release

## Separate footrests



- Sturdy, black, powder-coated round tube construction
- Anti-slip wooden footplate
- Width 350 mm, depth 300 mm
- Tilt adjustment from 0° to 20°, mounted on pendulum bearings
- Height adjustment range from 120 to 250 mm



- Sturdy, black, powder-coated round tube construction
- Anti-slip wooden footplate
- Width 500 mm, depth 300 mm
- Tilt adjustment from 0° to 20°, mounted on pendulum bearings
- Suitable for foot switch
- Height adjustment range from 120 to 410 mm



- Sturdy, black, powder-coated round tube construction
- Height adjustable by foot release
- Anti-slip wooden footplate
- Width 500 mm, depth 300 mm
- With height adjustment using a safety gas spring
- Tilt adjustment from 0° to 20°, mounted on pendulum bearings
- Suitable for foot switch
- Height adjustment range from 170 to 310 mm



- Sturdy round tube construction
- Anti-slip metal footplate
- Width 500 mm, depth 300 mm
- Tilt adjustment from 0° to 20°, mounted on pendulum bearings
- Suitable for foot switch
- Height adjustment range from 120 to 410 mm
- Also available in an ESD model (WS 5050 ESD)



- Wet room footrest
- Sturdy tube construction
- Anti-slip footrest
- Width 500 mm, depth 300 mm
- Tilt adjustment from 0° to 20°, mounted on pendulum bearings
- Height adjustment range from 120 to 410 mm

## Castors



All WERKSITZ dual castors feature load-dependent braking. We offer a selection of different load-dependent braking castor models for hard, soft and ESD surfaces.

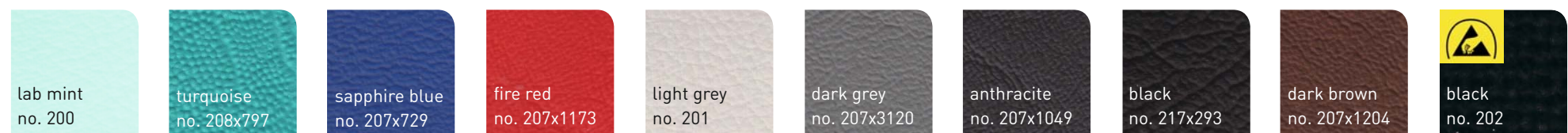
# THE CHOICE IS YOURS AND WERKSITZ HAS THE SELECTION TO CHOOSE FROM

## PUR integral foam\*\*



Black is the standard colour used; all other colours available for an additional charge.

## Imitation leather



Comfortable seating, air permeable, durable, dirt-repellent, cold/heat resistant, blood/urine resistant, disinfectant resistant. All colours available without extra charge.


Also available in genuine leather on request.



## Fabric

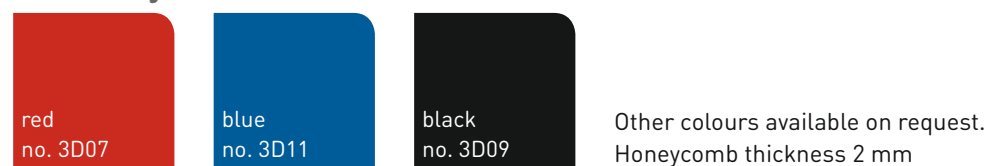


100% acrylic or 95% acrylic + 5% polyester on ESD models or 100% Trevira CS on flame-retardant designs. Free of AZO dyes, 100% CFC-free manufacturing, conforms to all European environmental directives.

 Also available with a conductive design

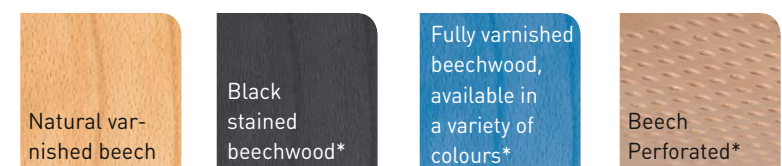
\*] Also available in flame-retardant versions in accordance with the DIN 4102 B1 standard

## 3D honeycomb fabric



100% Polyester. Highly breathable, excellent air circulation, highly elastic, very good shape recovery, antiallergenic and poses no health risks. Helps protect against mould and mites.

## Wood



\* Available with extra charge

\*\* Viscoelastic PUR integral foam with thermosensitive properties



# TRADITION AND THE ENVIRONMENT

Committed to our Franconian family tradition. An intact environment is the basis for lasting value and sustainable progress. At WERKSITZ we develop ergonomic workplaces for people and feel especially responsible for protecting the environment. We are committed to this responsibility, we protect our important ecological resources and we produce the majority of our components in Germany.

Here at WERKSITZ we may be known as the “specialists for workplace ergonomics”, but our environment and a healthy climate play just as important a role in everything we do.



- We are members of and participants in the Bavarian Environmental Pact – and we comply with all European environmental directives.
- We never use AZO dyes or chlorofluorocarbons (CFC), we work exclusively with silicone-free materials and we always adhere to PAH guidelines and REACH regulations.



**Health and  
our environment –  
we are committed  
to both!**

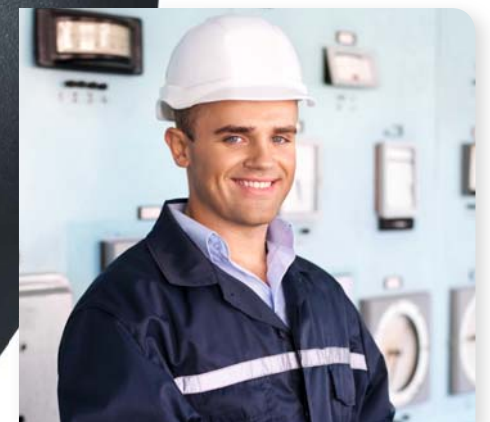


The specialists for workplace ergonomics



# WERKSTEP WORKPLACE MATS

Promotes health and prevents injury thanks to safe, healthy standing.



” This investment really paid off for us! Our employees benefit from an ergonomic workplace that puts health and safety first. This makes everyone more motivated and productive.



## WERKSTEP workplace mats – the right choice for standing workstations

Our bodies are not made for walking or standing on hard floors. Constant standing puts pressure on our back, placing a heavy load on our musculoskeletal system. The non-physiological curvature of the spine places stress on the intervertebral discs.

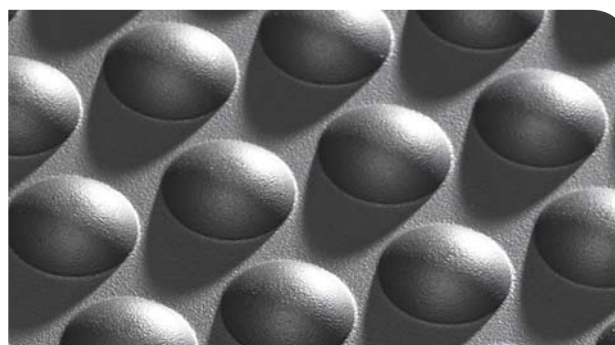
Physical activity inhibits the necessary metabolism between the intervertebral discs and the vertebral bodies. Constant standing also causes the muscles to work statically, which in turn impairs blood circulation in the muscles.

### Making healthy standing easy!

The elastic texture and knobby surface of WERKSTEP work mats reduce the stress placed on bones, joints and muscles. Pressure on the sensitive toe and ball sections of the foot is reduced considerably as the mats cushion the weight of the body. This helps keep the feet in motion, imperceptibly stimulating circulation. The WERKSTEP workplace mat promotes blood circulation in the legs.

WERKSTEP workplace mats promote health and prevent injury, helping employees stand continuously without placing undue stress on their bodies.

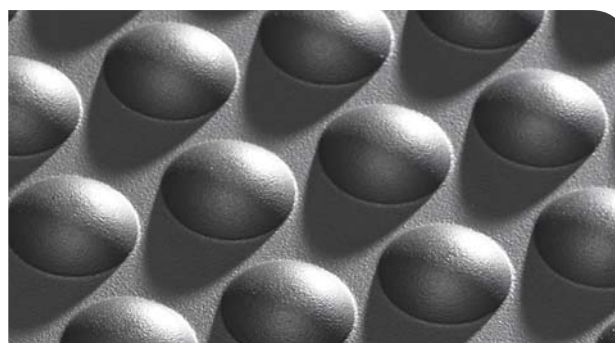
### The WERKSTEP range of products



**WERKSTEP Comfort mat:** The universal, extremely rugged mat for wet and dry areas.



**WERKSTEP Drehfit Comfort mat:** The mat for workplaces that require frequent rotating.



**WERKSTEP Classic mat:** The rugged, economical mat for all dry areas.



**WERKSTEP Hydrofit mat:** The mat for workplaces exposed to water, oil or chips and shavings.

### So many great reasons

The WERKSTEP workplace mat is an ergonomic floor covering that has been researched and tested to respond to the permanent stress of standing workstations. The basic material is made of polyurethane, a closed cell structure with a durable surface featuring a silky matte finish and visually appealing outer skin. WERKSTEP workplace mats are made using an especially dense basic material that provides a stronger return force for superb durability.

#### WERKSTEP workplace mats feature:

- High wear resistance
- Good behaviour characteristics even at extremely low temperatures
- Extraordinary ageing resistance
- Long life
- Extreme dimensional stability
- Durability
- Environmental compatibility (free of silicone, CFC, HCFC, PVC, propellant gas and solvents)

#### Protecting, insulating and easy to care for

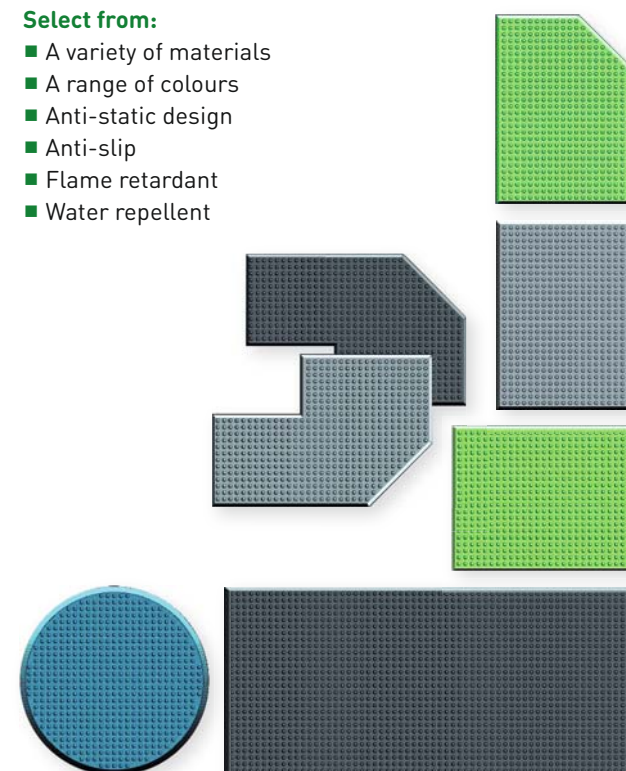
WERKSTEP workplace mats protect and insulate floor coverings and ground surfaces. Their attractive design creates a clean, friendly workplace atmosphere. They are easy to handle and clean.

#### Flexible and individual

The standard dimensions of 60 x 90 cm can be adapted to create custom-tailored solutions for workstations of any size or shape. Our variety of styles leaves nothing to be desired.

#### Select from:

- A variety of materials
- A range of colours
- Anti-static design
- Anti-slip
- Flame retardant
- Water repellent







# WERKSTEP WORKPLACE MATS

## SUITABLE FOR ALL TYPES OF APPLICATIONS

WERKSTEP  
Comfort PES



**Use:**

- In dry areas

**Material:** Polyurethane on polyester basis

**Properties:**

- Colour: anthracite
- Weight: 3.5 kg
- Temperature resistance: -30 °C to +80 °C
- Electrical resistance:  $10^7 \Omega$  (on ESD model)
- Very high material density

**Optional design:**

- Anti-static
- Anti-slip
- Colour

**Surface:** knobbly

**Underside:** smooth

WERKSTEP  
Comfort



**Use:**

- In wet and dry areas

**Material:** Polyurethane on polyether basis

**Properties:**

- Colour: anthracite
- Weight: 3 kg
- Temperature resistance: -35 °C to +95 °C
- Electrical resistance:  $10^6 \Omega$  (on ESD model)
- Flame retardant (fire class: B1 according to DIN 4102/FMVSS 301)

**Optional design:**

- Anti-static
- Anti-slip
- Colour

**Surface:** knobbly

**Underside:** smooth

WERKSTEP  
Drehfit Comfort



**Use:**

- In wet and dry areas
- For workplaces that require frequent rotating

**Material:** Polyurethane on polyether basis

**Properties:**

- Colour: anthracite
- Weight: 3 kg
- Temperature resistance: -35 °C to +85 °C
- Electrical resistance:  $10^6 \Omega$  (on ESD model)
- Flame retardant (fire class: B1 according to DIN 4102/FMVSS 301)

**Optional design:**

- Anti-static
- Anti-slip
- Colour

**Surface:** flattened, knobbly surface

**Underside:** smooth

WERKSTEP  
Duofit Comfort



**Use:**

- In wet and dry areas

**Material:** Polyurethane on polyether basis

**Properties:**

- Colour: anthracite
- Weight: 3 kg
- Temperature resistance: -35 °C to +95 °C
- Electrical resistance:  $10^6 \Omega$  (on ESD model)
- Flame retardant (fire class: B1 according to DIN 4102/FMVSS 301)

**Optional design:**

- Anti-static
- Colour

**Surface:** knobbly

**Underside:** knobbly surface for maximum standing comfort and anti-slip protection



## WERKSTEP Classic



### Use:

- Mainly in dry areas

**Material:** Polyurethane

### Properties:

- Colour: anthracite
- Weight: 3 kg
- Temperature resistance: -40 °C to +80 °C
- Electrical resistance:  $10^6 \Omega$  (on ESD model)

### Optional design:

- Anti-static
- Anti-slip
- Colour

**Surface:** knobbly

**Underside:** smooth

## WERKSTEP Drehfit Classic



### Use:

- Mainly in dry areas
- For workplaces that require frequent rotating

**Material:** Polyurethane

### Properties:

- Colour: anthracite
- Weight: 3 kg
- Temperature resistance: -40 °C to +80 °C
- Electrical resistance:  $10^6 \Omega$  (on ESD model)

### Optional design:

- Anti-static
- Anti-slip
- Colour

**Surface:** flattened, knobbly surface

**Underside:** smooth

## WERKSTEP Duofit Classic



### Use:

- Mainly in dry areas
- For workplaces that require frequent rotating

**Material:** Polyurethane

### Properties:

- Colour: anthracite
- Weight: 3 kg
- Temperature resistance: -40 °C to +80 °C
- Electrical resistance:  $10^6 \Omega$  (on ESD model)

### Optional design:

- Anti-static
- Colour

**Surface:** flattened, knobbly surface

**Underside:** knobbly surface for maximum standing comfort and anti-slip protection

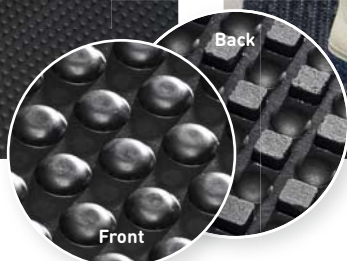


# WERKSTEP WORKPLACE MATS FOR WET ROOM AREAS

**2 to 8-YEAR  
WARRANTY**  
depending on model



WERKSTEP  
Hydrofit NBR



**Use:**

- For workplaces exposed to water, oil or chips and shavings

**Material:** Nitrile, NBR

**Properties:**

- Colour: black
- Weight: 5.7 kg
- Temperature resistance:  
up to +100 °C for short periods
- Electrical resistance:  $10^6 \Omega$   
(on ESD model)
- Resistant against common industrial  
acids, bases, oils, hydrolysis resistant
- Suitable for welding stations

**Optional design:**

- Anti-static
- Flame retardant (fire class: B1  
according to DIN 4102/FMVSS 302)
- Perforated design to drain off liquids

**Surface:** knobbly

**Underside:** Textured underside for better  
adhesion, water-repellent effect

WERKSTEP  
Hydrofit Classic NR



**Use:**

- For workplaces that are exposed to  
water and have special hygiene require-  
ments

**Material:** Natural rubber, NR

**Properties:**

- Colour: black
- Weight: 6.4 kg
- Temperature resistance:  
up to +55 °C

**Optional design:**

- Natural rubber, water repellent,  
partially oil resistant
- For food preparation, OP, lab or hygiene  
areas
- A range of colours

**Surface:** knobbly

**Underside:** Textured underside for better  
adhesion, water-repellent effect







# PUBLISHER INFORMATION & IMAGE CREDITS

**WERKSITZ GmbH W.Milewski**

Telefunkenstraße 9  
97475 Zeil am Main, Germany  
Phone +49 (0) 9524 8345-0

**info@werksitz.de**  
**www.werksitz.de**

Headquarters: Zeil am Main, Germany  
Managing Directors: Wolfgang & Genoveva Milewski  
Bamberg District Court Commercial Register Page HRB 579  
VAT ID no.: DE 811 2085 14  
Responsible Chamber of Commerce: IHK-Würzburg-Schweinfurt

© WERKSITZ GMBH, Zeil am Main, 2006-2013

## IMAGES

Peter Weigelt Photography

Lightning in meadow ■ © GIS – Fotolia.com  
Marmo e Alpi Apuane ■ © gdfotostudiolab – Fotolia.com  
blood bank laboratory ■ © angellodeco – Fotolia.com  
Waldweg im Sommer ■ © Thomas Otto – Fotolia.com  
Close up of laboratory treatment ■ © Kesu – Fotolia.com  
Zwei Hände, die sich halten ■ © Nelos – Fotolia.com  
Modern Warehouse ■ © malajscy – Fotolia.com  
couple ■ © muro – Fotolia.com  
businnesman sitting on beach ■ © peshkova – Fotolia.com  
Regentropfen auf Autolack ■ © Konrad Fotodesign – Fotolia.com  
Workers In Warehouse Preparing Goods For Dispatch ■ © Monkey Business – Fotolia.com  
Orme sulla spiaggia ■ © Dario Airoldi – Fotolia.com  
Construction worker operating a machine ■ © ikonoklast\_hh – Fotolia.com  
Assemblage ■ © kalou1927 – Fotolia.com  
Zahntechnikerin im Labor ■ © Robert Kneschke – Fotolia.com  
Male And Female Scientists Using Microscopes In Laboratory ■ © Monkey Business – Fotolia.com  
Frau an Drehbank ■ © ehrenberg-bilder – Fotolia.com  
Female Chef In Restaurant Kitchen ■ © Tyler Olson – Fotolia.com  
Man sitting at desk in wheelchair ■ © auremar – Fotolia.com  
Kfz Mechanikerin in einer Autowerkstatt ■ © ikonoklast\_hh – Fotolia.com  
young smiling engineer taking notes at control room ■ © GVS – Fotolia.com

## CONCEPTUAL DESIGN

Heike Grimm  
Gerald Leithner





